

Dual Language Education Programs & Unified Enrollment



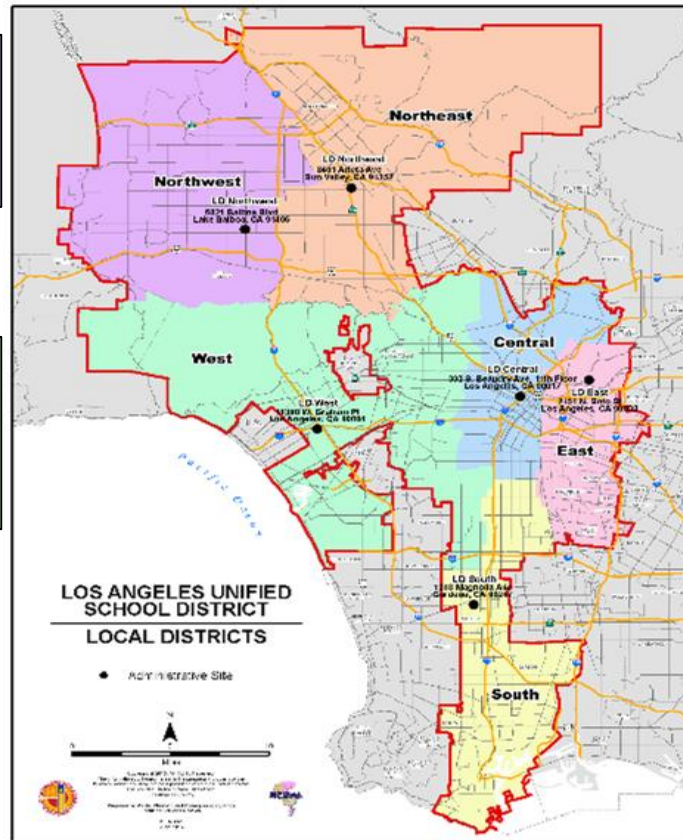
October 24, 2019

- **June 20, 2017 - *Establishing a Commitment to Biliteracy for All***
Establishes that the kindergarten class entering the District in 2019-2020 (Class of 2032) will be the first class that will graduate biliterate.
- **June 13, 2018 - *Realizing the Promise for All: Close the Gap by 2023*** Stating in part: Prepare all English Learners and students enrolled in Dual Language programs since kindergarten or first grade to receive Seals of Biliteracy by grades 5, 8 or 12.

182 Dual Language Education Programs for 2019-2020

LD Northwest:
11 programs
(Spanish & Korean)

LD West:
32 programs
(Spanish, Korean, Mandarin,
French & Armenian)



LD Northeast:
17 programs
(Spanish & Armenian)

LD Central:
40 programs*
(Spanish, Korean, Mandarin & French)

LD East:
47 programs
(Spanish, Mandarin & Arabic)

LD South:
34 programs
(Spanish, Korean & Mandarin)

* Includes Proposition 58 Start-up Program

WELCOME 2019-2020 DUAL LANGUAGE PROGRAMS!

Local District Northwest (4)

Fulbright Ave. ES

Lassen ES

Sepulveda MS

Sunny Brae Ave ES

Local District West (7)

42nd St. ES

Arlington Heights ES

Carson-Gore Academy ES

Grant ES (Armenian)

Harvard ES

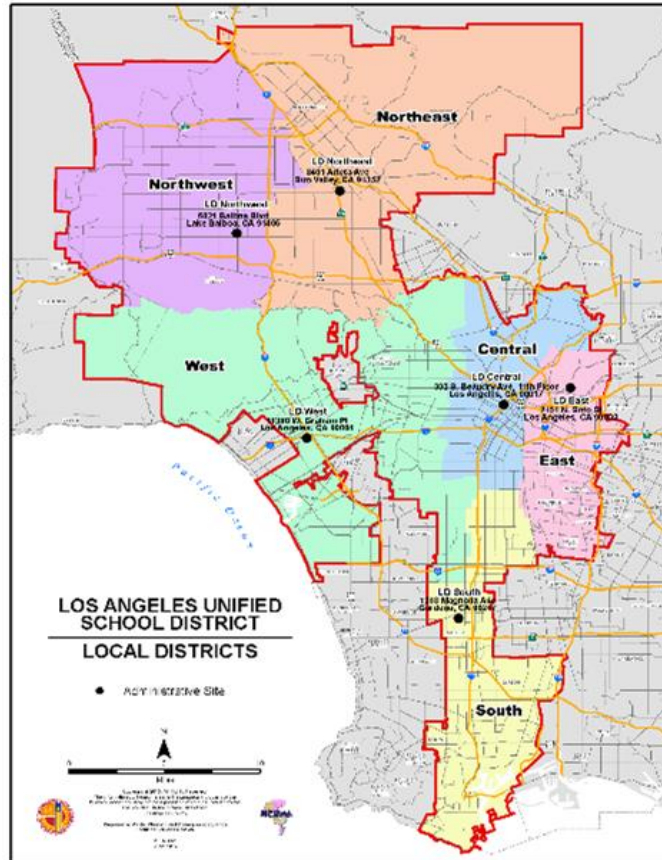
Venice HS

Venice HS (Mandarin)

Local District South (2)

Fremont HS

Narbonne HS



Local District Northeast (4)

Camellia Ave. ES

Ranchito Ave. ES

Coldwater Cyn. ES

San Fernando HS

Local District Central (13)

28th St. ES

Aurora ES

Bushnell Way ES

Cahuenga ES

Gratts ES

Harmony ES

Hobart Blvd. ES

Hooper Ave. PC

Irving MS

RFK ASGL (MS) (Korean)

RFK UCLA Com (MS)

Alexandria Ave. ES*

Riordan PC* (French)

Local District East (13)

Harrison St ES

Legacy STEAM HS

Loma Vista ES

Lorena St. ES

Marianna Ave. ES

Park Ave. ES

San Gabriel Ave. ES

San Miguel ES (Mandarin)

South Gate MS

Stanford Ave. PC

Stevenson MS

William R Anton ES

Tweedy ES*

* Proposition 58 Start-up Program

Bilingualism and Biliteracy

Academic Achievement

Sociocultural Competence



Dual Language Education Pillars



Los Angeles Unified School District



Dual Language Education



Bilingualism and Biliteracy

Bilingual and Biliterate students learn content while they simultaneously learn two languages. These students use both languages equally to advance and make decisions about their thinking and learning. They must be able to listen, speak, read and write in both languages, and use each of the two languages as a support for the other. Successfully competent Bilingual and Biliterate students demonstrate academic proficiency and mastery of content standards in two languages.



Academic Achievement

Bilingual and Biliterate students engage in intellectually rigorous and developmentally appropriate learning experiences based on State Standards. Our programs promote high levels of proficiency in English and another language, focusing on academic language. A priority is academic achievement across the curriculum.

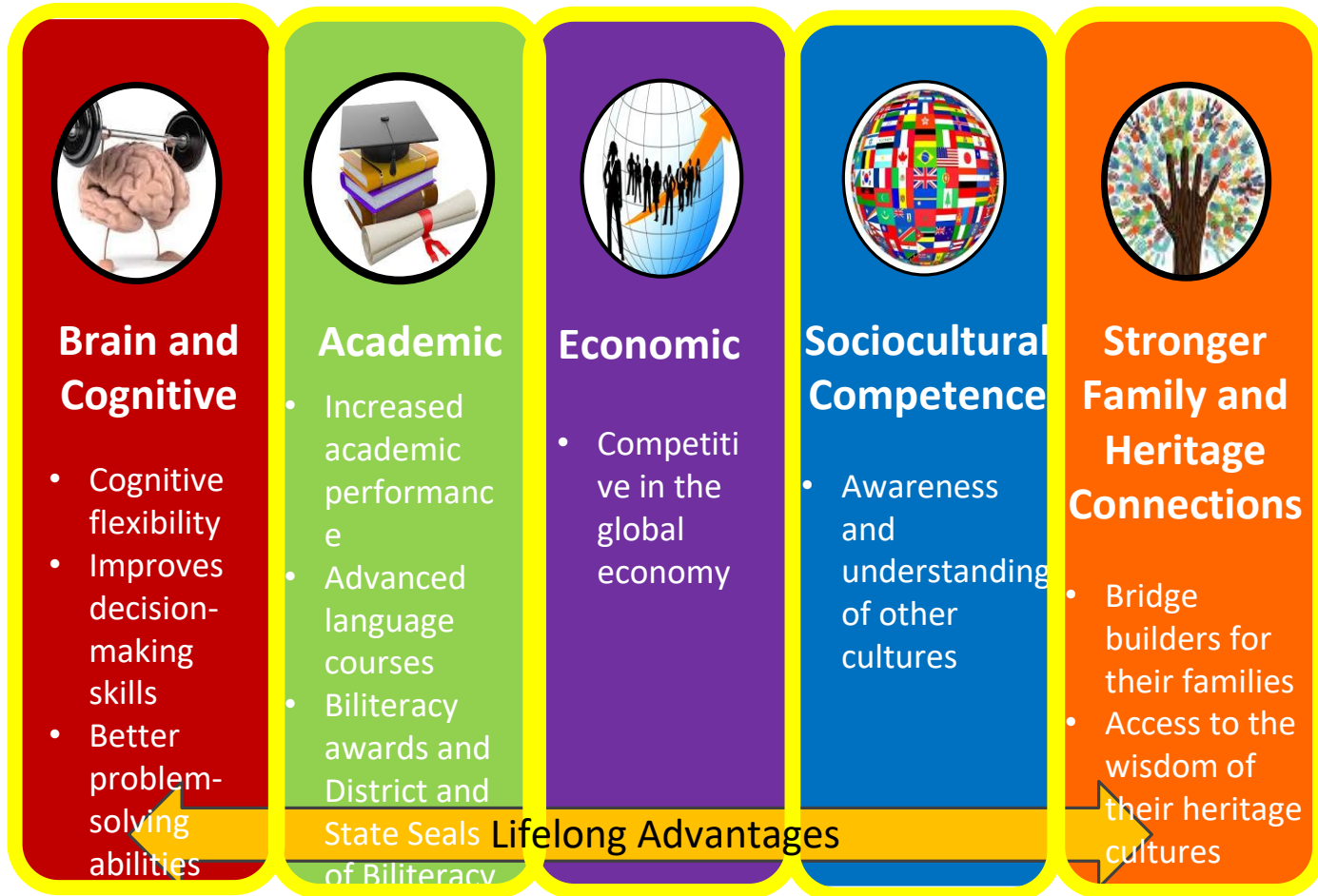


Sociocultural Competence

Bilingual and Biliterate students demonstrate sociocultural competence. These students recognize and use differences in themselves and others to create community. They have a multicultural perspective that is rooted in equity and social justice. They understand the sociopolitical context of their language learning and that society gives different and often unequal status to languages. Bilingual and Biliterate students are critically aware of the self, others, and the world, and the responsibility and commitment that comes from this awareness to address issues of societal relevance.

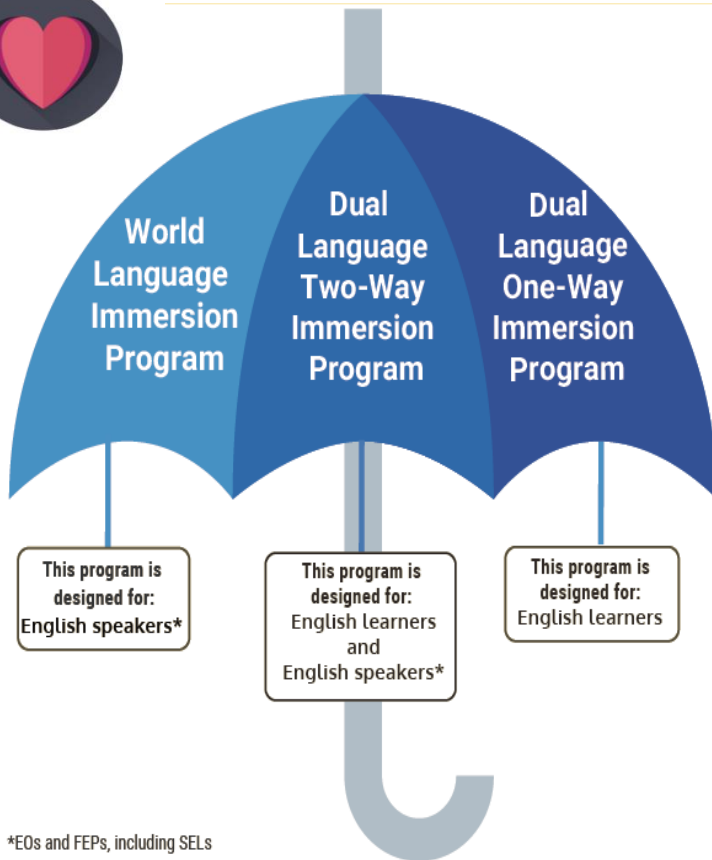
Based on the goals
of our programs,
what are our
shared values and
beliefs as
practitioners?

Benefits of Becoming/Being Bilingual and Biliterate



Source: Adapted from Californian's Together - Campaign for Biliteracy

Dual Language Education



*EOs and FEPs, including SELs

- All three programs share the goals of promoting bilingualism and biliteracy, high levels of academic achievement, and sociocultural competence
- Provide grade-level content and literacy instruction to all students through two languages (English and a target language)
- Instruction must be provided in the **target language** for at least **50%** of the instructional day

Thomas and Collier Study Key Research Findings Conducted from 1985 through 2017

1997

English learners in two way and one way immersion programs had higher long term academic achievement when compared to English learners in other programs.

EOs in two way programs outperformed their monolingual peers academically by their 5th year in the program and remained high academic achievers throughout their schooling

2012

Report emphasizes:

- **The importance of structure and design and three non-negotiable factors of dual language instruction:**
 1. K-12 commitment
 2. Separation of the two languages for instruction
 3. Minimum of 50% of instruction in the non-English language

2017

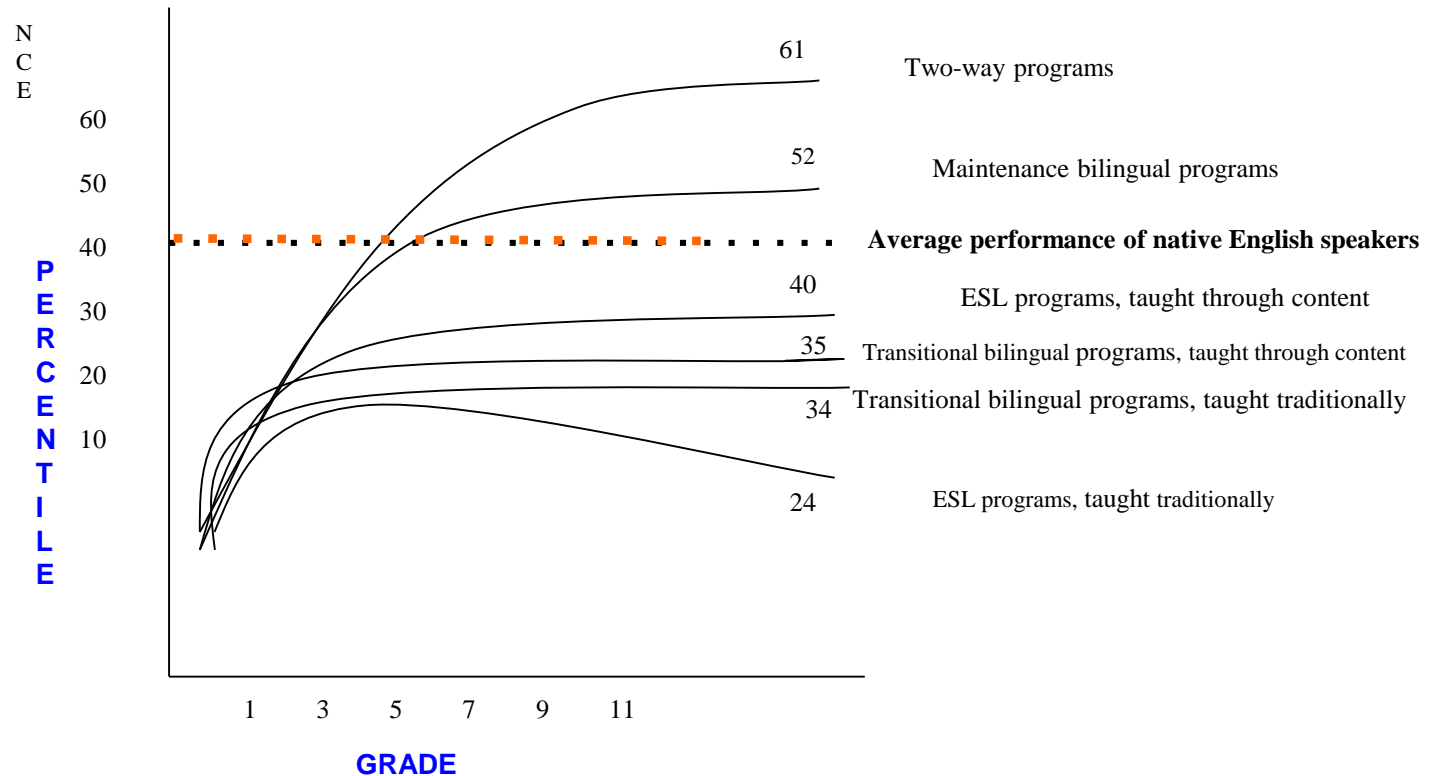
Two-way programs increase academic achievement for **all students regardless of subgroup**

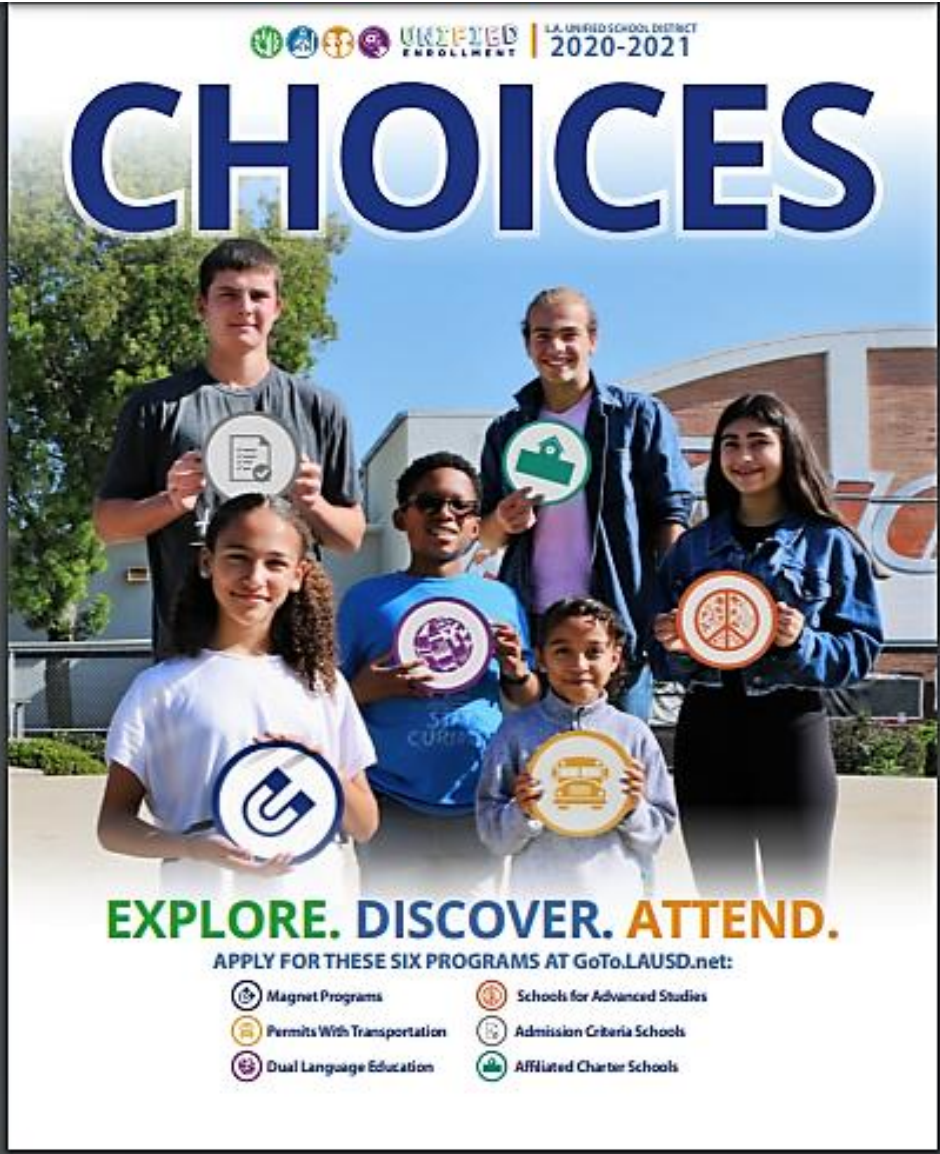
African American students of low income in two way programs were by middle school 2 grades ahead of their African American peers of low income not in dual language programs

Results continue to be substantiated and validated through 32 years of research

Thomas and Collier Study (1997)

Key Research Findings - English Learners











UNIFIED ENROLLMENT | L.A. UNIFIED SCHOOL DISTRICT
2020-2021

CHOICES

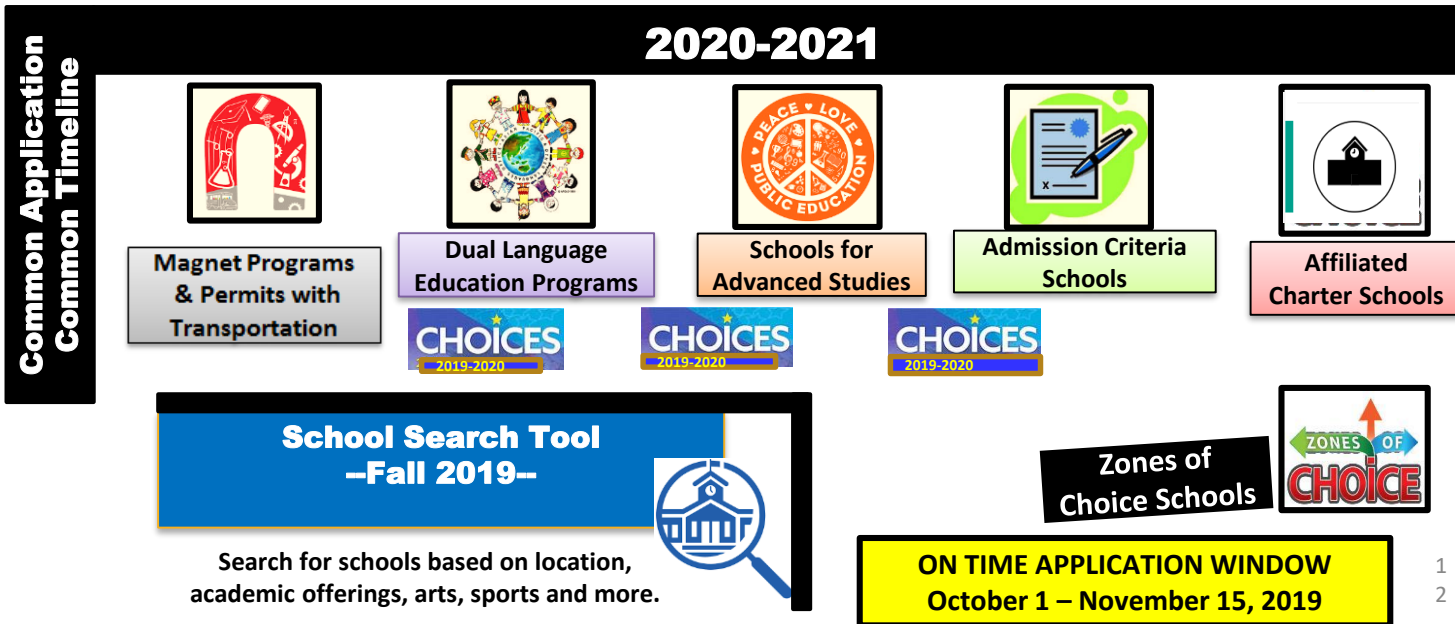
EXPLORE. DISCOVER. ATTEND.

APPLY FOR THESE SIX PROGRAMS AT GoTo.LAUSD.net:

 Magnet Programs	 Schools for Advanced Studies
 Permits With Transportation	 Admission Criteria Schools
 Dual Language Education	 Affiliated Charter Schools

- On-time Choices application period is 10/1/19-11/15/19
- Email requests for on-time paper applications to ZOC@lausd.net
- DLE/UE Principals' and Parent Timeline is posted on the MMED website

Unified Enrollment



EXPLORE. DISCOVER. ATTEND.



"I want to find an
LA Unified School."

EXPLORE



Explore L.A. Unified Schools! In a few simple clicks, search and compare schools based on geographic location, academic offerings, extracurricular activities and more. Be it early education, Pre-K-12th, special education or adult education, L.A. Unified can meet



"I want to learn about
Choices programs."

DISCOVER



Discover choice programs! Magnet, Permit with Transportation and Dual Language programs are all additional choices beyond your residential school. Learn more about these unique programs that all require completion of an application.



"I want to Attend an
LA Unified School."

ATTEND



Attend an L.A. Unified school! Learn how to enroll in a school OR apply to multiple school choice programs through a single parent account. An Enrollment Form is required to attend your residential school.

GoTo.LAUSD.net

Click on the Apply Button to Apply Online



[Find a School](#)

[How to Attend](#)

[Need Help?](#)

[Apply Now](#)

Enroll Now
for 2019-20

[En Español](#)

EXPLORE. DISCOVER. ATTEND.

To Apply Online, Parents Need a Username & Password



Español

Parent Login

Username

Password



[Forgot your password?](#)

[Register](#)

[Log In](#)

- Username is the email address you used for account registration.
- Session times out after 60 minutes.
- If you'd like to change the email address associated with your account, please sign in using old email address. Account edits can be made once you logged in successfully.

Late 2019-20 Paper Applications can be Downloaded & Printed

CHOICES BROCHURE AND TRANSLATIONS

Click on the images below to download late application



2019-20 Choices Late Application - English

*Applications must be printed full size on legal paper
(8.5 X 14").



2019-20 Choices Late Application - Spanish

*Applications must be printed full size on legal paper
(8.5 X 14").

What Schools Have Seats Available?

IMPORTANT NOTE:

The Late Application window for Choices and Open Enrollment is now open. Please click [here](#) for the list of schools with potential seat openings. Conservatory of Fine Arts applications are accepted June 1, 2019 through September 6, 2019.



[Find a School](#)

[How to Attend](#)

[Need Help?](#)

[Apply Now](#)

Discover all your

CHOICES

[Download Choices Brochure and Translations](#)

[En Español](#)



POTENTIAL SEAT OPENINGS

Local District (LD)

Northwest

Grade level for (2019-2020) school year

All

Zip

All

Program

Dual Language Education Program

Search

Reset

LD	Grades	School Name ↑	School Code	Phone	Address	Program
NW	00	Limerick ES Spanish Dual Language Two-Way Immersion Program	1488102TWS	(818) 341-1730	8530 LIMERICK AVE WINNETKA 91306	DLE
NW	01	Limerick ES Spanish Dual Language Two-Way Immersion Program	1488102TWS	(818) 341-1730	8530 LIMERICK AVE WINNETKA 91306	DLE
NW	00	Napa St ES Spanish Dual Language Two-Way Immersion Program	1544602TWS	(818) 885-1441	19010 NAPA ST NORTHRIDGE 91324	DLE
NW	01	Napa St ES Spanish Dual Language Two-Way Immersion Program	1544602TWS	(818) 885-1441	19010 NAPA ST NORTHRIDGE 91324	DLE
NW	TK	Nevada ES Spanish Dual Language Two-Way Immersion	1545902TWS	(818) 348-2169	22120 CHASE ST WEST HILLS 91304	DLE

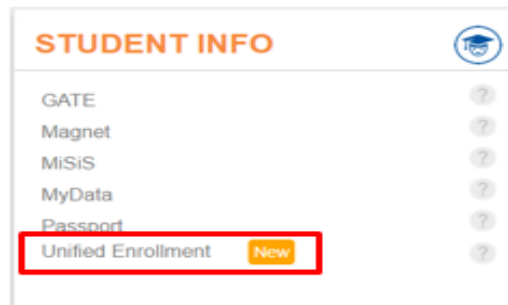
Refer to the Accept/Decline Job Aid for Guidance

HOW TO COMPLETE DUAL LANGUAGE ACCEPT/DECLINE PROCESS

UNIFIED ENROLLMENT | 02/09/19

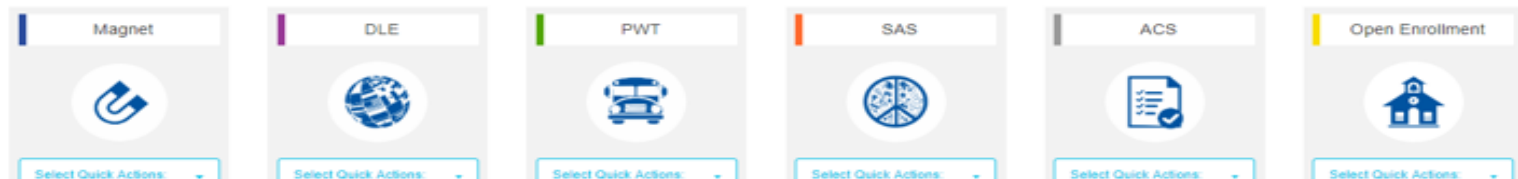
Log in to the Principal's Portal

1. Go to – principalportal.lausd.net
2. Go to Student Info and select **"Unified Enrollment"**.



3. Click on the DLE drop down list and select **"DLE Application Roster"**.

Select a program below to manage application, waitlist, verification and enrollment functions.



Unified Enrollment Process for School Sites


The 2020-2021 Principal's Timeline will be posted on the MMED website

2020-2021 DLE & UE Principal's Timeline



October	October 1, 2019: On-time Choices application window opens. Parents/guardians can apply online at GoTo.LAUSD.net or apply with a paper application. Online applications will receive a confirmation receipt. New & matriculating students must submit an application. Continuing DLE students at the same DLE school do not need to submit an application. <i>*Please send requests for paper applications to: JOC@lausd.net</i>
November	November 15, 2019: Choices DLE on-time application deadline. Week of November 18, 2019: A list of students applying for grades 2-12 that require target language verification will be available in the Principal's Portal. DLE schools administering the target language assessment must enter a "meets" or "does not meet" in the Principal's Portal by February 21, 2020. The window to complete target language verification is from November 2019 through February 2020.
December	December 9-20, 2019: Confirmation or Correction letters sent to Parents/guardians who applied with an on-time application. Parents must submit corrections by January 17, 2020.
January	January 17, 2020: Deadline for Principals to enter Enrollment Capacity. DLE Principals must enter enrollment capacity for the 2020-2021 school year in the Principal's Portal. January 17, 2020: Deadline for parents to submit corrections electronically or by mail.
February	February 3, 2020: Late Choices Application Window opens. DLE programs accept late applications all year. February 21, 2020: Deadline for Principals to enter the target language assessment results in the Principal's Portal. Schools administering the target language assessment to students with an on-time application need to enter either a "meets language eligibility" or "does not meet language eligibility" in the Principal's Portal (Select Unified Enrollment, DLE, Quick Actions, and DLE Verification List).
March	March 9-13, 2020: Principals' Opportunity to Review New Applicant Roster. Principals will be able to review their roster before the selection/wait list letters are delivered. March 16-20, 2020: Parents/guardians of on-time applicants will receive either a Selected or Waiting List letter for all Choices programs to inform them of selection status.
April	April 3, 2020: Deadline for parents/guardians of newly selected students who applied with an on-time application to accept or decline placements. Students who do not accept or decline placements will default to his/her resident school. April 13, 2020: Principals can start to call students who applied with a late application from the Late Application Roster (in the Principal's Portal), to offer available seats. (If and only if the on-time wait list has been exhausted.)
May-July	Enrollment: Parents who accepted a selection must contact the school for enrollment procedures. Schools are encouraged to call parents who accepted their DLE program but have not contacted the school to begin the enrollment process.

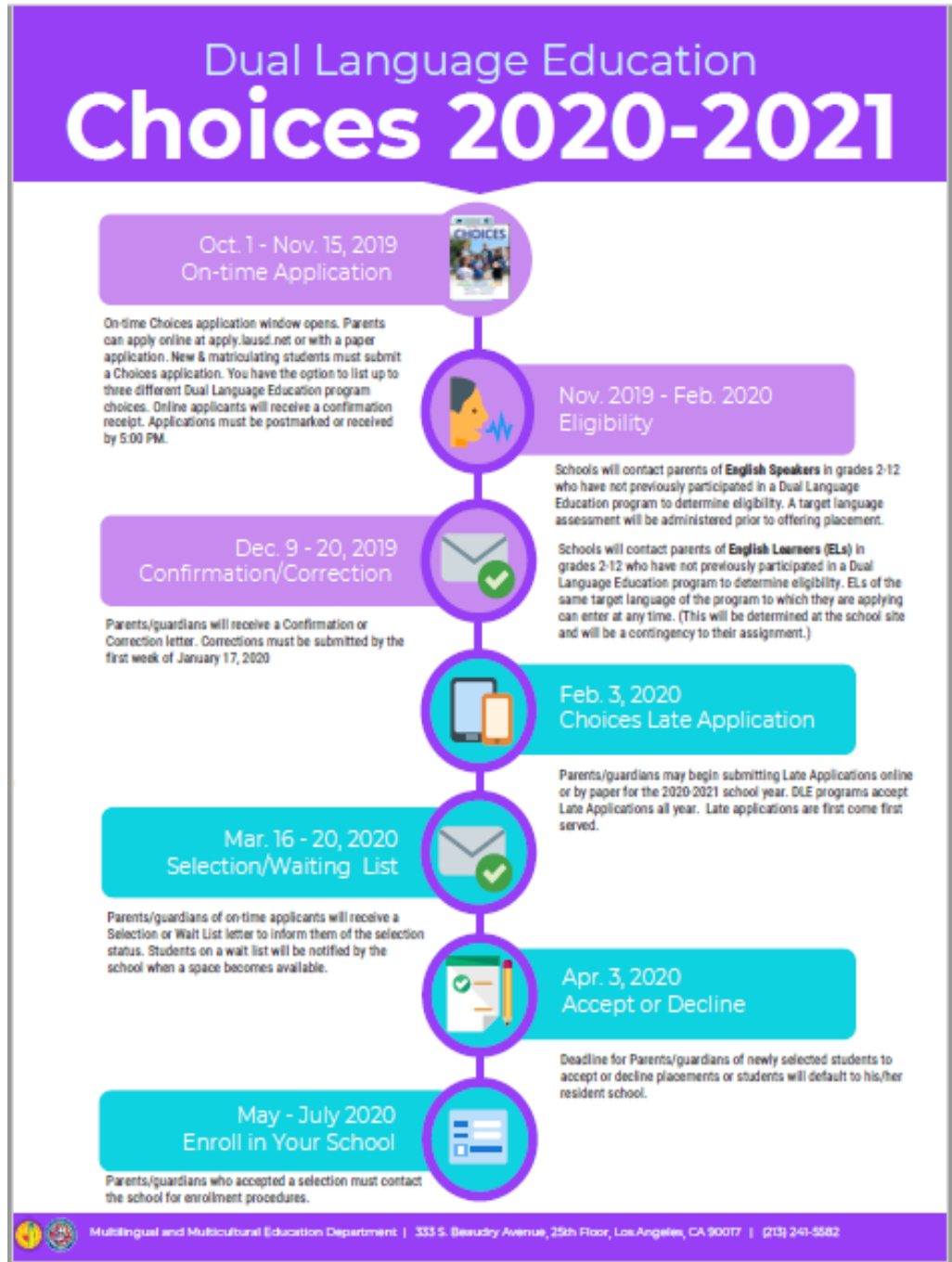
10/8/2019

Approved by: Lydia Acosta Stephens
Executive Director. 

DLE Application Parent Timeline

The 2020-2021 Choices Parent Timeline will be posted on the MMED website

UE selects On-time applicants and schools select applicants who applied with a Late Application



Contact Us

Diana Sanchez,
DLE/UE Specialist
dab9296@lausd.net

Cristina Rodriguez
DLE Coordinator
(213) 241-8672
cristina.rodriguez3@lausd.net

David Gaitan, UE
Liaison
(213) 241-2631
david.gaitan@lausd.net

*Thank
You!*